



# Preserving Yesterday Enriches Tomorrow



THE NEWSLETTER OF THE MADISON COUNTY HISTORICAL SOCIETY

---

P.O. Box 467, Madison, Virginia 22727

May 2006

---



## **BILL SPEIDEN TO SPEAK AT THE MAY 21, 1006 MEETING**

Four hundred years ago the first permanent English settlement was founded at Jamestown, Virginia. Beginning in June of this year and continuing through December of 2007, our state will be recognizing this anniversary. Recognitions of historical events evolving from that period will be presented and discussed throughout the state during this anniversary year. The Madison County Historical Society will sponsor a conference day in 2007 highlighting the Manahoac Indians who were natives of this area.

The next Society meeting on Sunday, May 21<sup>st</sup> will take place at 2:00pm at the Madison County Auditorium. It will preview another interesting part of Native American history. Bill Speiden, period American History re-enactor and interpreter and Orange County farmer of many

years, will speak to us about his experiences while tracing the Lewis and Clark expedition. The topic of his talk will be "The Lewis and Clark trip from the Indian point of view." The talk will include a History of the "Doctrine of Discovery," some slides depicting the consequences to the Indians resulting from the European arrival, and his own exposure to the Indian culture. In addition, he will present an essay by Richard Littlebear, Ed.D – the president of Dull Knife College on the Northern Cheyenne reservation. Bill is a graduate of Cornell University. He has a long involvement in Orange County civic activities. Bill has trekked the trails of past pioneers in Idaho and Wyoming, including ten years interpreting the 1776 period with oxen and six years interpreting the 1849 Oregon Trail with oxen. He maintains a yoke of oxen on his farm for reenactment. This special educational opportunity should not be missed! The presentation will be followed by refreshments in the Kemper Residence next door.

## **TED KITCHEN SPEAKS ON OLD CRIGLERSVILLE SCHOOL**

Ted Kitchen, who attended the Criglersville School for 11 years, spoke to Society on Sunday, February 19<sup>th</sup>. Using a Lou Mesa print as an illustration he described the history of the schools in Criglersville. An original school was located where the Methodist parsonage is today. Following that a school was built near the present day site of Mount Shiloh Baptist Church. The building is now located behind the Mountain

Store in Criglersville. This building had school rooms on the first floor. The second floor was used by the Odd Fellows.

In 1915 the Criglersville High School was built on the site of the present day school. It served the pupils of the Robertson District which included, Aylor, Brightwood, Criglersville, Etlan, Nethers, Novum and Syria. It originally had 4 classrooms on the first floor and an auditorium on the second floor. A later addition added another 4 classrooms (2 on the first floor and 2 on the second) in the rear and a porch on the front of the building. The building had a full basement where lunch was served (at a cost of \$0.15). Pupils could bring commodities (i.e. eggs, green beans) to exchange for lunch. There was also a chemistry lab and athletic changing rooms. Agriculture, Shop and Home Economics were taught in other small buildings on the property.

Mr. Kitchen spoke of Miss Mae Blakenbaker who held the record for longevity as a teacher in Criglersville. She had attended school there as well. Miss Lucy Davis was the principal for 16 years. She was a feared individual. Each morning she appeared at the door and announced "Attention" at which time the pupils had to line up in order to enter the building. During this time all teachers were single females (no married women were allowed to teach) with the exception of the agriculture and shop teachers. This changed (of necessity) during World War II.

The school became accredited in 1926 and was in existence until January of 1946 when it burned during the night while school was closed for vacation. High school pupils used the out buildings for the remainder of the year. In the fall of 1946 they began attending the high school in Madison. The elementary school pupils used an abandoned CCC camp until the new elementary school was built.

The school housed 11 grades. There was no kindergarten or 8<sup>th</sup> grade. Since there were only 8 classrooms some grades were combined. This would be different each year depending on the number of pupils in each class. Mr. Kitchen said that when he was in 4<sup>th</sup> grade some 4<sup>th</sup> graders were with the 3<sup>rd</sup> graders and some were with the 5<sup>th</sup> graders. He felt fortunate to be with the 5<sup>th</sup> graders. He felt that the maximum number of pupils in the school at any time was

200. Every Wednesday a different homeroom was responsible for presenting a program in the auditorium for the school. Since there was no gymnasium all activities were outdoors.

The program concluded with a tape showing some activities at the school in 1936. The original silent movie was produced by Frank Moser who was the violin teacher. Besides showing a nine year old Ted Kitchen singing we also were treated to a scene with girls dancing, boys and girls playing sports and the Board's own Jane Volchansky playing the violin. Mr. Kitchen concluded with the remark that the Criglersville School had been a large influence in his life.

## **ANNUAL MEMBERSHIP MEETING**

The Annual Membership meeting of the Madison County Historical Society was held on Sunday, February 19, 2006 at 2:00pm. Rita Cunningham, Penn Bowers, Tucker Hill and Michael O'Connor were elected to three year terms on the Board of Directors. The Annual Report of the Society was made available to members. There are some left and they will be available at the next meeting. Following the program the Board of Directors met briefly to elect officers. The officers are: President; Rita Cunningham; Vice-President: Penn Bowers; Secretary: Betty Lynne Yowell; and Treasurer: Bill Scholten.

## **ANTIQUES APPRAISAL**



Steven Hoffman with an old rocker

Our first Antiques Appraisal held on February 25<sup>th</sup> was a huge success. We opened the

Kemper Residence at 10:00am to a line of individuals with their precious possessions that continued until closing at 2:00pm. Thanks to Steve Hoffman and Sarah Francis Hays for making this a very profitable day. Another "Roadshow" is planned for February 2007.



Sarah Hays views some articles

## MEMBERSHIP

The following have become new members of the Society:

- [Joe Daniel](#)
- [Elizabeth J Bryant](#)
- [William Hardaway](#)

We are happy to have you with us and hope you have a rewarding membership experience.

## KEMPER TEA

Another successful tea was held on Wednesday, March 22<sup>nd</sup>. Special thanks to the "Kemper Girls" (Genevieve McLearn, Mary Haught, Heidi Sage, Jill Schreiner, Betty Lynn Yowell, Beppy White, Lee Decker, Rita Cunningham and, newcomer, Pam Krause) for all their hard work. The next tea is scheduled for Wednesday, September 27<sup>th</sup> at 12:00 pm at the Kemper Residence on North Main Street. The menu will feature an assortment of savories, scone, sweets and fruits. Reservations are required and may be made by calling Rita Cunningham at 948-6542. Handicapped seating is available upon request. The cost of this delicious repast is \$18.00/person.

## ARCADE MUSEUM NEWS

Visitors have been steady throughout late winter and spring. Recent guests came from Tallahassee and Boston. They had come to Madison 43 years ago for car repairs and wished to revisit the town.

The most popular sales item has been *Ragged Mountain* by Audrey Horning. This book tells of the early settlement of the Nicholson, Corbin and Weakley families. Indian puzzles are available as well as Dewey Lillard's book *Land Grants of Madison County, Virginia 1722-1865*.

Our volunteers, who keep the museum open and are greatly appreciated, continue to be faithful. With the coming of summer when we open on Saturdays additional help will be needed. Please give us a hand if you can spare 4 hours on a Saturday in June, July or August. Call Emily Williams at 825-7503.

## ARCADE MUSEUM CLIPPING PARTY

In late February eleven people gathered at the museum to clip newspaper articles. This included board members, regular volunteers and several others willing to give of their time. We have old Madison County Eagles from the mid 1890's that need to be clipped. We still have many more papers to clip to complete this project. The next clipping date is on Tuesday, May 16<sup>th</sup> between the hours of 10:00am and 2:00pm. Any amount of time that you can give will be appreciated. Bring a pair of scissors and meet at the Museum for an enjoyable, productive time. We look forward to having a large group. If you have questions, call Emily William at 825-7503.

## AT THE ARCADE MUSEUM

Like Verizon, progress is made every day in getting our holdings into acid free containers. Josh Kitchens continues to enter our data into the computer program. Incidentally, Josh has been accepted at George Mason University in their graduate program and will be leaving this summer. However, he and our consultants will continue to check in with us from time to time to

answer questions and give guidance. We are most appreciative of the time given by Josh Kitchens and our consultants from UVA, Edward Gaynor and Ellen Welch.

Recently, Channel 29 from Charlottesville covered our Family Files project which, if the response is any indicator, was viewed by many people. The project, in its infancy, has already netted 9 new files since the airing and has resulted in increased activity at the Museum. The files at present include the families AYLOR, BERRY, CARPENTER, CAVE, CLAY, CLORE, COATES, CROW/CROWE, DAVIS, FISHBACK, FRAY, GIBBS, GOOD, GRAVES, HARRISON, HENSHAW, HOFFMAN, HILL, HUME, KIPPS, KITE, LILLARD, LOHR, McMULLEN, REYNALDS, SMITH, TATE, TURNER, UTZ, WEAKLEY, WEAVER, WHITE, and YOWELL.

As a reminder to our members, we would like all families who have a connection to Madison County to let us copy their genealogies, no matter how brief. Having copies in several places insures that the information will not be lost to fire or other catastrophe and it insures availability to future generations who may be searching for it. While genealogies of long-time residents of Madison are most sought after, by no means does that exclude present or past residents who have chosen to live in Madison. You are now Madisonians, too. Those genealogies are also welcome. So, please bring your papers by and let us copy them.

Some of our members have read in *THE MADISON EAGLE* of the discovery of an 1830 ledger of tailors Cave and Gordon of Madison. This ledger, recently entrusted to the Madison County Historical Society for copying, contains nearly 225 names of residents of the area who had clothing made for them by this business. John Berry has agreed to do the digital photography of the pages of the ledger and the Madison County Board of Supervisors has appropriated sufficient funds to see that the reproduced pages are made available to the public. This project is one which your society is happy to undertake because of the wealth of information derived from it. The question is: are there attics in Madison which may have similar books yielding information about Madisonians? If there are, please get them out, dust them off, and share the information

## ARCADE MUSEUM EXHIBITS

In February, Jane Volchansky prepared an exhibit on Black History; it will be on display until June. Linwood and John Imlay's exhibit, "Civil War Artifacts", is on display until July. "Commemoration of America's 400th Anniversary" will be explained in an exhibit beginning in June. The permanent displays of the Strode Collection of Native American artifacts and the Rapidan Railroad exhibits will continue.

Ideas for exhibits are encouraged. Please call Lee Decker, 948-7808, if you have an idea.

## ACQUISITIONS

The Society thanks Mary Anne Edel for her donation of a Coats family bible, family photographs, auction bill and newspaper clippings.

## 2006 ORNAMENT



The 2006 ornament features the Piedmont Episcopal Church. It costs \$11.00 plus tax. This slight increase in price is due to an increase in manufacturing costs to the Society. Previous ornaments (the Courthouse for 2002, the Kemper Residence for 2003, the Arcade for 2004 and Hebron Lutheran Church for 2005) are also available and cost \$10.00 plus tax each. You can purchase ornaments at the Arcade and the Library. For more information call 948-5488.

## DONATION

A donation of \$500.00 was given to the Society by Barbara Staples Mac Donald in memory of her mother, Susie Watson Staples and grandmother, Clara Jackson Watson. The funds will be applied to the Archival Supplies Account, a fund established to acquire archival supplies needed to maintain the Museum's acquisitions. Donations to this account may be made by sending your check to the Madison County Historical Society, P.O. Box 467, Madison, VA 22727 with "Archival Supplies" note on the memo line.

## HISTORICAL SOCIETY OF THE PIEDMONT ANNUAL MEETING

Board of Director Members, Jane Volchansky, Lee Decker and Rita Cunningham traveled to Henrico County on Saturday, April 1<sup>st</sup> to attend the 16<sup>th</sup> annual meeting of the Historical Societies of the Piedmont. The program showcasing the evolution of the Capitol in Richmond was of great interest. The opportunity to meet with peers to exchange ideas and information was a valuable part of the meeting as well.

## PORTRAITS OF MRS. WASHINGTON AND GENERAL LEE

Maryvonne Longley has given a pair of portraits, one of Robert E. Lee and the other of Martha Washington, to the Madison County Historical Society. These are fine lithographs, mounted on canvas and in handsome matching 19<sup>th</sup> century frames. Neither portrait is signed and there is no indication of the artist or studio on the stretchers or frames.

In an effort to establish the provenance of the portraits, the Historical Society has called on the services of a number of institutions and experts. Surprisingly the search has not been easy and the results are still in part inconclusive. We do know now that Mount Vernon has in its collection the same portrait of Martha Washington, and that that portrait was made in the studio of Elijah C. Middleton (1818-1883) in

Cincinnati, Ohio around 1866. Since our portraits of General Lee and Mrs. Washington are not only mounted identically but are on canvas that shows the same amount of darkening due to age it seems reasonable to assume that they are the products of the same studio, and we know that Mr. Middleton was preparing a series of portraits of famous Americans which he referred to as "National Oil Portraits." These were chromolithographs prepared with oil paints and mounted on canvas. Our next challenge was to discover the models used by Middleton, probably a photograph for General Lee and certainly a portrait or a copy of a portrait for Mrs. Washington.

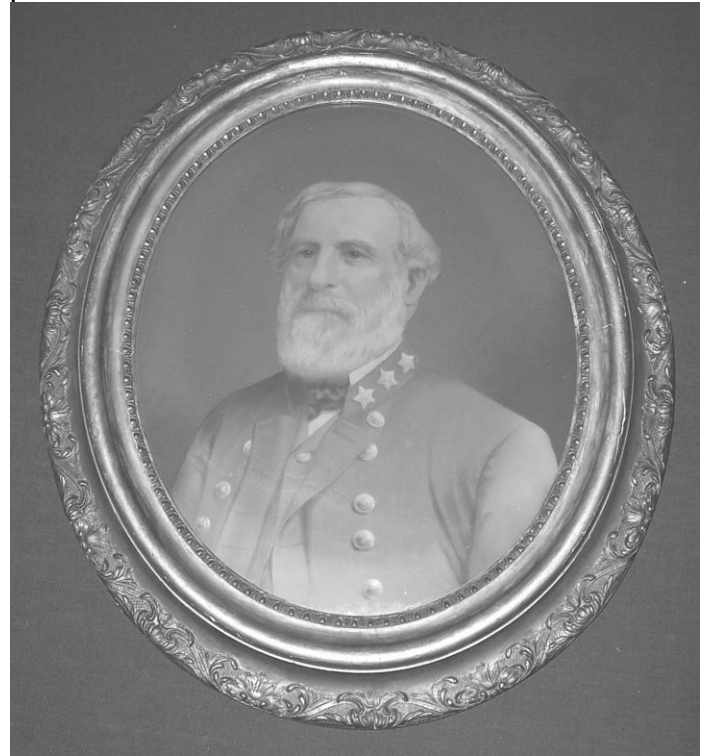


The model for the portrait of Martha Washington was difficult to locate but the trail was interesting and finally rewarding. The Internet, our ultimate encyclopedia these days, was searched with no helpful results. None of the many sites devoted to portraits of Martha Washington contained an image that closely resembled our Mrs. Washington. Curators of various collections were then consulted. The staff at Mount Vernon did not know the model for their Middleton portrait of Martha Washington. The famous portrait of Mrs. Washington in her later years, the so-called "Athenaeum portrait," by Gilbert Stuart, on display at the National Portrait Gallery, served as model for many later copies, but, while the general pose in the Stuart portrait is similar to that in this portrait, the drapery is

different, and a close model for our portrait could not be identified. The Internet was explored again, using several search engines. Among all the museum and publication websites no model for the Middleton portrait was found. However, tucked in among all the expected sources was the website of an antique currency dealer. On opening that unlikely source there, on a U. S. one silver dollar certificate of 1901, we found our Martha Washington. The dealer checked his references and reported that the image of Mrs. Washington was an engraving by Charles Burt, based on a portrait by Jalabert. The National Bureau of Printing and Engraving confirmed that the image on the silver certificate was that of the Burt engraving, based on a portrait by Jalabert, and used on U.S. postage stamps (1902, 1922) and on the silver certificates (1886, 1901), but they had no information on the Jalabert portrait. Charles Francois Jalabert (1819-1901) was an acclaimed French painter, known especially for his portraits. However, no record could be found of his producing a portrait of Martha Washington. At this point the National Portrait Gallery, with this information in hand, referred us to the Frick Art Reference Library, and there the mystery was solved. Jalabert made a portrait of Martha Washington in 1855, based on the Gilbert Stuart portrait. Reproductions of Jalabert's portrait were published by his dealer, Goupil, who had a New York branch where these reproductions and those of other prominent Americans were available. The Jalabert portrait was popular and several copies are documented, those of Wellstood and Buttre, as well as that of Burt.

The original portrait by Jalabert was last recorded in a private collection in New Jersey. There is, however, some confusion as to its medium; it has been variously described as being oil on canvas and "crayon" (probably pastels). Another fascinating aspect of this portrait's history is the statement by Jalabert in his correspondence that he had made a portrait of the mother of Washington. Jalabert acknowledged elsewhere that his portrait was based on that by Gilbert Stuart, but he believed that the portrait he copied was that of Washington's mother. Moreover he says it was done on the basis of a written description, meaning probably a written description of colors or technique but certainly, in view of the general

resemblance, with at least a sketch of the original, a copy, or a copy of a copy.<sup>1</sup> In turn a copy of Jalabert's portrait would have been used by Middleton, making our portrait at least a third generation copy of the Jalabert portrait and at least a fifth generation copy of the famous Stuart portrait.



The identification of the model for the Lee portrait has been complicated by Elijah Middleton himself. Mr. Middleton's National Oil Portraits project was well under way in January 1866 when he wrote to General Lee reporting that General Sherman, whom he had recently visited in St. Louis, suggested that he do portraits of General Lee and General Jackson and requesting that General Lee send him photographs of himself and General Jackson with descriptions of their complexions. In March of the same year he sent the following letter to General Lee:

*Gen. R. E. Lee  
Lexington Va.*

*Dear Sir*

*Allow me to introduce to you Mr. E F Lutz of  
Baltimore.*

---

<sup>1</sup> "J'ai fait le portrait de la mere de Washington sur description ecrite." ©mile Reinaud, *Charles Jalabert, L'homme, L'artiste, d'apres sa correspondance*, Paris, 1903, p. 158.

*You will remember having received from me a few weeks ago a letter written in Cincinnati, in which I requested you to favour me with such a likeness of yourself as was satisfactory to you, and your friends, to be copied in my style of Oil Colors, to which you replied that "you had no such likeness, nor had you seen any that was satisfactory to you."*

*Having learned that Mr. Brady of Washington City had succeeded in producing a very fine Photograph from a sitting (sic) you gave him, a few days ago, I have visited this City for the purpose of procuring a copy of the same.*

*Mr Lutz, my general agent for Maryland, and Virginia, visits you for the purpose of presenting you with a few copies which I trust you and friends will endorse as correct.*

*I regard these copies as beautiful works of art, and if I can get the desired endorsement, I propose to proceed at once to copy the same in my style of Oil Colors.*

*By your permission, Mr Lutz will make a few notes of your complexion; he will also show you a sample of our style of Arts, in the portrait of Washington which is the same style, and size that we propose for your portrait.*

Very Respectfully Yours,

E C Middleton<sup>2</sup>

This time his request was apparently successful and a Lee portrait was produced. However, none of the Mathew Brady photographs of General Lee that we have been able to locate would serve as a model for this portrait. There may well have been further communication between Mr. Middleton and General Lee; at any rate, we know that Middleton published at least three different Lee portraits.<sup>3</sup> Our portrait very much resembles, moderately in face and almost exactly in the tunic, the photograph taken by Minnis and Cowell in 1863. This was a popular photograph, used by a number of artists, and Middleton may well have used another copy of it as his model. One fine copy of the Minnis and

Cowell photograph is an engraving by Paul Giradet, published around 1865 by Goupil & Co., the same company that published Jalabert's portrait of Mrs. Washington. The possibility certainly exists that Mr. Middleton obtained not only his model for Martha Washington but also his model for General Lee from the New York shop of this French art dealer.

For the information obtained in this search special thanks are due to the following institutions and individuals: John and Ruth Ann Cosky of the Museum of the Confederacy, Wendy Wick Reaves and Ellen Miles of the National Portrait Gallery, Jacqueline L. Rogers of the Frick Art Reference Library, Vaughan Stanley of Special Collections, Leyburn Library, Washington and Lee University, Christine Hennessey of the Smithsonian American Art Museum, the Library of Congress' Prints and Photographs Division, Gretchen Goodell and Barbara McMillan of George Washington's Mount Vernon, Roger Schreiner for photographs of the Historical Society's portraits, Ray Marrello of Antique Currency, the Cincinnati Historical Society, the Cincinnati Museum of Art, and the National Bureau of Printing and Engraving.

---

<sup>2</sup> Reproduced by permission of the Robert E. Lee Papers, Special Collections, Leyburn Library, Washington and Lee University

<sup>3</sup> Communication from Wendy Wick Reaves, Curator of Prints and Drawings, National Portrait Gallery

The Madison County Historical Society is a non-profit organization founded and operated for the perpetuation and preservation of Madison County heritage and traditions. The mission of the Society is to record, preserve, and stimulate interest in the history of Madison County, its families, occupations and way of life.

Membership is for one year with renewals due on the anniversary date of membership. Membership and other contributions to the Society are tax deductible to the full extent of the law. Types of Membership:

Benefactor	\$250 and above	Business	\$50
Partner	\$100 to \$249	Family	\$20
Friend	\$50 to \$99	Single	\$10
		Student	\$5

Membership applications are available at the Arcade and the Kemper Residence. For more information call the Society Office at 540-948-5488 and leave your name, telephone number, and address. We will send you a membership application or return your call to answer your questions.

Madison County Historical Society

P.O. Box 467

Madison, Virginia 22727

